

Westcott Village Magazine

February 2026



Abinger Nursery.....	35
Advertisements Index.....	60-61
Community Fridge.....	38
Craft with Community.....	50
Dorking Arts Society.....	23
Dorking Local History Group.....	21
Dorking Museum	47-49
February Wordsearch.....	33
Floodlighting	9
From Holy Trinity.....	4-5
Green Westcott.....	53-59
Historical Events in February.....	32
Holy Trinity Services.....	6-8
Landbarn Farm Photos.....	39
Mole Valley Ramblers Walks.....	29
Music in Dorking.....	51
Pippbrook Bowls Club.....	41
QRMW.....	37
Riverbank Surgery.....	61
RSPB.....	19
Spring Music Celebration.....	24
Surrey Hills All Saints Primary School....	11-13
Westcott Coffee Morning.....	15
Westcott History Group.....	25-27
Westcott Village Association.....	43-45
Westcott Village Hall Hire.....	40
Westcott Village Hall Trustees.....	17
Westcott Village Hub	31
Westcott Baby Meals.....	29
Westfest.....	41
Who's Who in Westcott.....	62-63

Westcott has a population of over 2,000 and this is the only magazine written specifically for the Westcott area by the people of Westcott. It is hand delivered, free of charge, to every household and further copies are available at the church, local shops, pub and doctor's surgery.



If you have any articles, photos, letters, etc that you think we may like to feature in the next issue, please email the Editor on:

editor@westcottmag.com

But please note, publication will always be subject to space and at the discretion of the Editor.

Copy deadline for

March issue:

8th February 2026

This magazine, published by the Church in Westcott, is printed on Forest Stewardship Council (FSC) accredited paper from a sustainable source. The views expressed are those of the individual writers and do not necessarily reflect the views of the Church, Editor or Westcott residents.

FROM THE EDITOR



Spring is nearly upon us (well, at least that's what I am telling myself as the daffodils are starting to come up early!)

If you fancy being a part of village organisation then the Village Hall is looking for new Trustees, see page 17 for all details and get your application in. It's a rewarding role and you would be part of a team.

There is a lot going on this month, with Valentine's Day on 14th, thinking about what to have on your pancakes on Shrove Tuesday on the 17th - are you a traditional lemon and sugar lover, or a Nutella nut? We also have Lent, and community crafting on a couple of Thursdays (see page 50 for details) to mention just a few.

If you're a keen marmalade maker you need to know that Kingfisher Farm Shop's marmalade competition closes on 24th so get busy and take your entries down before that (p16).

If the weather is bad then curl up with a cup of tea (and possibly a bit of cake!) and have a go at the wordsearch on page 33. No prizes given but you do get the satisfaction of having stretched the little grey cells for a bit.

The Westfest team are having a year off this year, after 10 years of effort, so I'm sure we all want to thank them, particularly Anna Kemkers, for all their efforts so far and look forward to another great event in summer 2027.

Cath
editor@westcottmag.com



...FROM THE CHURCH IN WESTCOTT



CONFESSION TIME

So, I should probably own up to one of my many failings as a village Vicar. Here it goes... After three and a half years here, I am still not entirely sure what all the various parts of the church building are called. I am oblivious as to where the 'nave' begins and ends. I have no recollection as to what an 'apse' is. And I had always assumed that a 'transept' was a popular van made by Ford but apparently not.

If you are into church architecture and the like, then you may also have noticed on more than one occasion over the past three years I have put the wrong-coloured cloth on the communion table for the season (I did it again at Christmas this year).

"I HAD ALWAYS ASSUMED
THAT A 'TRANSEPT' WAS
A POPULAR VAN MADE BY
FORD BUT APPARENTLY
NOT."

Now, most of you are thinking (and my heartfelt apologies if you fall into the other camp) that this does not really matter – and I do not entirely disagree with you.

I come from what is known as the 'low church' stable of the church and have often worried that the religious trappings of robes and coloured cloths can get in the way of the very real, intimate and personal relationship with God that

I have encountered throughout my life. I want people to encounter the presence of God – not simply a religious looking space.

However, over the past few years I have begun to appreciate that my suspicion of these 'religious

trappings' was at least in part due to a lack of maturity in my own understanding of the breadth of ways in which God encounters people. The author and thinker C.S. Lewis was once asked about what style of church he liked and replied that his preference was neither for high church nor for low church, but rather for deep church. The style and the look of the place only matter in so much that they help form the people who make up the church into deeper, wiser, bolder followers of Jesus.



...FROM THE CHURCH IN WESTCOTT



I have come to appreciate that the church building itself, with all its strangely named parts, is designed to tell a story about God, the world, and us. I have come to realise that in changing the colours around the church to symbolise the various parts of Jesus' life, death and resurrection can create a profound annual rhythm which reminds us about the God we follow and how He calls us to live.

We are about to enter the season of Lent, a time Christians around the world have traditionally set aside for confession, reflection, and lament at all that is wrong in our own lives, and the wider world.

As an outward sign of what we long to be happening within us this season the altar is sparsely covered and decorations hidden away.

I began this article with a confession. Admittedly it was not particularly juicy as confessions go, but over the coming weeks I will be saying sorry to God for the stuff that I do get wrong. Reflecting on my mess is not about wallowing in guilt – but it does make the forgiveness God freely offers seem all the more extraordinary. My mess does not exclude me from God. It is the most extraordinary, freeing, humbling gift – and bit by bit over the years it has begun to push me beyond being low church, or high church, and slowly, oh so slowly, on towards the glorious depths of God's grace.

Rev'd Tim

SUNDAY SERVICES AT HOLY TRINITY



8.30am Book of Common Prayer Communion, A warm welcome in our beautiful, traditional service.

10.15am Friendly, relaxed service, using Common Worship and a range of music styles. This service is also livestreamed on Zoom.



For 10:15am Zoom service connection, please scan this QR code, or visit the Online Services page of thechurchinwestcott.org.uk and follow the link.

The church is open every day, 9am-4pm for private prayer & reflection

DATE	THEME	8:30AM	10:15AM
1st Feb	Candlemas	Book of Common Prayer Communion	Communion with Sunday Club
8th Feb	Eco Church	Book of Common Prayer Communion	20-20-20 Service with Breakfast
15th Feb	tbc	Book of Common Prayer Communion	Communion with Sunday Club
22nd Feb	Lent 1: Vineyards	Book of Common Prayer Communion	Communion with Sunday Club



MARKING LIFE EVENTS

All who live in Westcott or have a connection here are very welcome to have christenings, funerals, weddings in Holy Trinity. Contact vicar@holytrinitywestcott.org.uk for more information.

MIDWEEK PRAYER & WORSHIP

Wednesdays	10am	Communion at St John's
------------	------	------------------------



BUILDING
FRIENDSHIPS



SHARING
LIFE



Holy Trinity Church

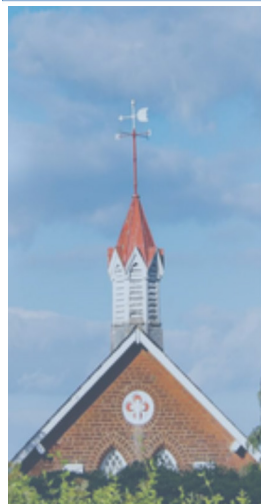
A Sacred Place of Peace & Prayer,
Open to All

Holy Trinity Church is open for you to visit,
for private prayer
or reflection

Every Day 9:00am-4:00pm

Come to enjoy the beauty and peace,
pray, reflect, breathe, be.

All are welcome



St John's Hall

is a beautiful space to hire for events and
meetings, with availability weekdays,
weekends and evenings.

email

stjohnsbookings@holytrinitywestcott.org.uk
to enquire.



THE CHURCH IN WESTCOTT

Ash Wednesday Services at Holy Trinity



9am – A Short Reflective Service

10am – Communion at St John's

7.30pm – Ash Wednesday Service with Communion

JOIN US AT HOLY TRINITY FOR OUR PANCAKE PARTY! TUESDAY 10TH FEBRUARY



 THE CHURCH IN
WESTCOTT
Worship and Community

EVERYONE IS WELCOME!

THE CHURCH IN WESTCOTT

The Church in Westcott is part of the Westcott Good Neighbour Scheme and we are always here for a chat, prayer, pastoral need.

Debt advice: Paul Stacey (paulstacey88@gmail.com)

Holy Trinity Pastoral Assistants: Mark Shakespeare (01306 888010), Ali Mabley (alimabley.htw@gmail.com)

For help, or more information, please contact
Tim Armstrong, Vicar: vicar@holytrinitywestcott.org.uk
or visit thechurchinwestcott.org.uk



FLOODLIGHTING

Many thanks to Westcott Village Association for sponsoring the church floodlighting for February.

If you would like to sponsor the floodlighting, please contact Sarah Massey at admin@holytrinitywestcott.org.uk. (Suggested donation of £75 to Westcott Church Funds.)

BUILDING
FRIENDSHIPS



SHARING
LIFE

Would you like to *make a real difference* to people's lives?

If so, come and work for **Home Instead Epsom and Mole Valley**,
a 5 star employer, rated as **outstanding** by the Care Quality Commission.



Dorking, Westcott, Westhumble, Capel

- £25.38 – £30.40 per visit
- Petrol allowance and paid travel time
- Minimum call time – 2 hours
- Excellent training provided

Benefits include: Pension scheme, health scheme, holiday pay, shop discounts

Call: **01372 741 544**

Email: **maggie.adenmosun@emv.homeinstead.co.uk**

homeinstead.co.uk/epsom-mole-valley

Each Home Instead franchise office is independently owned and operated.
Copyright © Home Instead 2025.



Attune Reflexology Dorking

Women's Bespoke Reflexology in Wotton, Surrey



Is life full with

- A Difficult Menopause
- Period Problems
- Anxiety
- Stress
- Aches & Pains
- Digestive Complaints
- High Blood Pressure
- Cluster Headaches
- Loss or Grief

Reflexology Can Help You

- Deeply Relax
- Support Your Menopause
- Ease Anxiety
- Improve Sleep
- Lower Blood Pressure
- Aid Digestion
- Reduce Stress
- Ease Aches & Pains
- Improve Mood

For more information

www.attunereflexologydorking

Instagram @attunereflexologydorking

Tel: 07811526156



SURREY HILLS ALL SAINTS PRIMARY SCHOOL

Reception Bees



We have been learning all about people who help us. We were very lucky to welcome Isla's mummy into our

classroom to talk about dentistry and caring for our teeth.

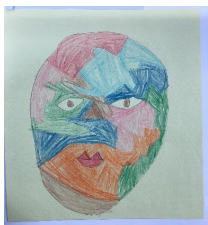


Years 1&2 Butterflies



Butterfly class have been learning all about lines, shades and tones in art

this half term. We found out that a 'line is a dot that goes for a walk'. We worked hard to use different media to produce



different shades and found out that holding a pencil in various ways can

alter the thickness of lines. Our end product was a self portrait based on the artwork of Paul Klee and we are very proud of what we produced.

Year 3 Hedgehogs

In geography, we have been looking at all things Antarctica. Hedgehogs had a special visitor to bring their learning to life. Our special visitor went on a 3-week expedition to Antarctica in 2013



with *Walking with the Wounded*. He came to tell us all about how to survive the freezing temperatures, what he had to wear, how they cooked their meals, where they slept and what they saw. Hedgehogs



were fascinated about his adventure and asked some brilliant





Westcott based Wedding Photographer



www.jamescroftimages.com



Denbies Wine Estate

The Vineyard Hotel | Tours & Tastings | Dining
Art Gallery | Experience Days | Wine & Gift Shop

Dorking, Surrey, RH5 6AA | denbies.co.uk | 01306 876616



questions. They loved trying on his different clothing and even learning about where you go to the toilet in Antarctica!

Year 4&5 Otters



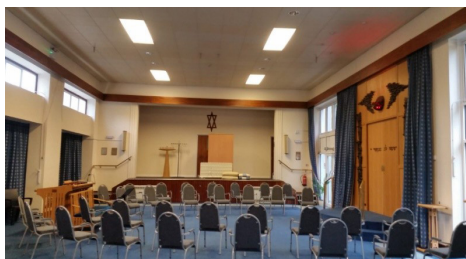
To kick off our 'Why do oceans matter?' topic, Otters had a go at using some VR headsets. They were absolutely amazing and transported us straight to the Great Barrier Reef. We learnt all about different corals and how they survive. It



was mesmerising to watch them move right next to you.

Year 6 Owls

The children visited the synagogue in Weybridge to gain insight into the Jewish faith as part of their learning in R.E. We were proud of the insightful questions they asked and the respect they showed when handling the artefacts.



Additionally, the children all took part in the ROAR project - a nationwide initiative to develop their skills as design engineers. We wish to congratulate all the children for their innovative designs. Saskia and Orla won. Emily, Tegan, Matilda, Bobby and Heath were Highly Commended.

Kathryn Saunderson
Acting Headteacher



IMDT
INSTITUTE OF MODERN DOG TRAINERS

Informative, practical, fun learning

Accredited trainer using proven science based methods of positive, ethical, reward based training.

Locally based - services include:

- Preparing for your new arrival - home set up
- Puppy through to adult training.
- Group classes and bespoke 1-2-1 training
- Behaviour consultations
- Focused training workshops
- Trusted trainer for Therapy Dog Training UK
- Fun Agility
- Hoopers classes



Therapy Dog Training UK

www.surreyhillsdogtraining.com
info@surreyhillsdogtraining.com
John Venn
Tel: 07880 707467

MARGRAVE SOLICITORS LLP

The Old Post Office, 130 Epsom Road
Guildford, Surrey GU1 2PT

- **Wills, Trusts and Probate**
- **Lasting Powers of Attorneys**
- **Court of Protection matters**
- **Care Fee advice**
- **Advising Attorneys / Deputies**
- **Non-mortgage related residential conveyancing**



Wills & Inheritance Quality

01483 562722

enquiries@margravellp.co.uk
www.margravellp.co.uk

Authorised and regulated by the Solicitors Regulation Authority
SRA number 533213

Dorking Pest Control Services

Local Authority Approved Contractors

www.dorkingpestcontrol.com







Our Services Include:

Wasps, Bee Swarms, Hornets, Rats, Mice, Squirrels, Fleas, Flies, Ants, Cockroaches, Bed Bugs, Rabbits, Moles, Foxes and Deer.

- Domestic, Commercial and Industrial
- Contract Work
- Preventative Control Programmes

Experts in pest control throughout Surrey

Office: 01306 743001
Ivor: 07710 117491
Chris: 07971 519415

www.dorkingpestcontrol.com



FENCING & TREE SURGERY

SPECIALISTS

- Felling • Tree Surgery
- Pruning • Hedge • Cutting
- All Types of Fencing Supplied & Erected
- Fully Insured Free Estimates

Tel: 01403 824048

Mobile: 07714 689 824



CHEAP HARDWOOD LOGS FOR SALE

www.gb fencingandtreesurgery.co.uk

WESTCOTT VILLAGE COFFEE MORNING

Wednesday 4th February



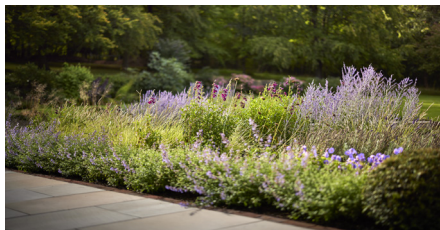
*The Village Hall
10.30 - 12.00 midday*



*Tea or Cafetiere Coffee and Biscuit £1.50
Jigsaws and Books £1.00 each
also
Sandra's delicious cakes*

Do come and join us





For professional garden design advice from project inception to completion, including planting schemes that support wildlife habitats and edible gardens.

With experience of creating many elegant and imaginative gardens in Westcott and the Surrey Hills. Please get in touch and I will be happy to discuss your needs.

*Helen Thomas Garden Design
m. 07771962221
www.helenthomasdesign.co.uk
helen@helenthomasdesign.co.uk*



Willow Green Decorating

A friendly & professional service
Dorking & surrounding areas

Julian: 07941 194364
HolmwoodHandymanUK@gmail.com

*The full moon this
month rises on
1st February and
is known as the
Snow Moon*



FANNY'S MARMALADE COMPETITION

CLOSING DATE: TUESDAY 24TH FEBRUARY

ENTRY FORMS ARE AVAILABLE FROM THE FARM SHOP

info@kingfisherfarmshop.com
01306 730 703

'Kingfisher'

Farm Shop
Flower Shop

A Public Call for New Trustees for Westcott Village Hall Trust CIO

In accordance with Westcott Village Hall Trust CIO's constitution and the CIO Administration Rules (dated April 24th 2024), Rule 2, which sets out the appointment of new CIO Trustees, the current trustees are required to refresh the existing group of trustees. Accordingly, each year, we invite applications by inhabitants of Westcott and the surrounding area who are willing to put themselves forward, or, who are nominated by other residents with their consent.

There are currently 6 trustees all of whom are remaining as trustees. They consist of Helen Everett, Deborah Lewis, James Broderick, Andy Gray, Andy Taylor, and Sally Hewetson. We are permitted up to 12 trustees to serve at any one time. A trustee can serve for three years up to a maximum term of 9 continuous years.

Please refer to the CIO's website www.westcottvillagehall.com and the Charity Commission's website <https://register-of-charities.charitycommission.gov.uk/en/charity-search/-/charity-details/5098773/governance> for further information on this specific charity. The Charity Commission's general website <https://www.gov.uk/government/publications/the-essential-trustee-what-you-need-to-know-cc3/the-essential-trustee-what-you-need-to-know-what-you-need-to-do> is useful for broader information on the role of a charity trustee in the UK.

Anyone interested in becoming a trustee please apply by submitting an email to info@westcottvillagehall.com or a letter addressed to Westcott Village Hall, Institute Road, Westcott RH4 3NP. Please set out the reasons why you wish to be appointed giving details of the skills and experience that you will bring to the Trust.

All applications will be considered by the trustees and a meeting with applicants may be requested. The trustees will decide before the end of April on any appointment.

Save the date for our annual open meeting of the Westcott Village Hall Trust CIO where all residents of the village are invited to observe a trustees' meeting. This is will be on Wednesday April 29th at 7:00pm, in the village hall.



Westcott Village Hall Trustees

TONY WINCH

CARPENTER, JOINER & CABINET MAKER

www.tonywinch.com

01306 742373

07969 016 924

 **Colin Campbell**
Local Electrician

- Registered Part P ●
- Approved Contractor ●



T: 01306 883 126

M: 07770 760 581

colincampbell146@btinternet.com

• Quality Flowers • Personal Service • Customer Satisfaction •

FLOWERS by ELAINE

- Wedding Specialists •
- Qualified Florists • Fresh Flowers & Plants • Local Delivery •
- Varied Gift Selection • Corporate Functions • Special Occasions •
- Funeral Tribute Specialists • Interflora Worldwide •

66 High Street, Dorking, Surrey RH4 1AY

T: 01306 883511 • E: fbe@btconnect.com

www.flowersbyelaine.co.uk



The Tree Associates (Surrey) Ltd

Arboricultural Experts

Westcott based

We are a local tree surgery company offering all aspects of tree works by our qualified and fully insured team.

- Tree surgery
- Hedge cutting
- Felling
- Consultancy
- Stump removal
- Oak Processionary
- Planting
- Moth treatment & nest removal

info@ttasurreyltd.co.uk

0800 1978490

Sundown Cottage, Guildford Road, Westcott, Surrey, RH4 3QE

EDE BROS

• REMOVALS • STORAGE • SHIPPING •

01306 711293
edebros.co.uk

- Established 1926, Capel-based and family owned
- For **STRESS-FREE** local, national and worldwide moves
- Contact us for your **FREE** estimate...



Grey Heron

With their long bills and hulking grey bodies, Grey Herons are unmistakable and commonly seen along rivers, lakes and even garden ponds. Usually seen alone, this all changes from February, when the birds head to communal nesting sites, known as heronries. Here they will lay their eggs, with typically 3 to 5 chicks hatching in March and April.

In 2022, the largest heronry recorded by the British Trust for Ornithology (BTO) contained 110 nests. Since 1928 the BTO Heronries Census has monitored nest sites. Overall the UK's breeding population has increased, and this is reflected in the local site at Bookham Commons which has recorded up to 20 nests.



Grey Heron: Image courtesy Rob Carr

See more on our activities and photos or if you're interested in joining below
 Facebook: RSPB Dorking and District
 Instagram: @rspb_dorking
 Website: <https://group.rspb.org.uk/dorkinganddistrict/>

Jonathan Groves

Lawn Mowing
Lawn Treatments
Garden Tidy Ups
Turfing
Hedge Cutting
Pressure washing



Phil's Mowing
DORKING

Dorking and surrounding areas
07905 160765
phil@philsmowingdorking.co.uk



Sherlock Funeral Service

130-year-old, independent,
family business.

- Funeral Directors & Monumental Masons
- Private Service Chapel & Rest Rooms
- Home visits if required
- Pre-paid Funeral Plans

Trellis House
 190 South Street
 Dorking RH4 2ES
 T: 01306 882266
 E: office@sherlockandsons.co.uk



Sherlock Funeral Service
 is a part of Stoneman
 Funeral Service as of
 2010.



Anthony Wakefield & Company
Fine Art & General Insurance Brokers

01306 740 555



Bespoke Insurance For Your Home & Lifestyle

- ✓ Buildings and Contents
- ✓ Worldwide Travel
- ✓ UK Holiday Homes
- ✓ Collections, Antiques & Art

www.anthonywakefield.com

Anthony Wakefield & Company Ltd is authorised & regulated by the Financial Conduct Authority with reference: 307545.
 Company number: 01756254. Our registered office is Holmbury, The Dorking Business Park, Station Road, Dorking, Surrey, RH4 1HJ.



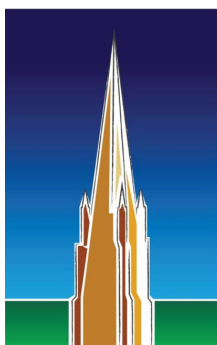
Dorking Local History Group

The DLHG continues its popular programme of both live and Zoom talks on a fascinating range of topics. These are free to members, but non-members are welcome. Upcoming dates include:

- **Munich and the Czech refugees in Surrey:** Live talk by Trevor Brook. As Hitler took over the Sudetenland in 1938, Social Democrats, trade unionists and Jews fled for their lives. 150 of them came to live in Albury. Come along and hear about a piece of "lost" WW2 history. Monday, 2nd February at Crossways Community Baptist Church, Junction Road, Dorking RH4 3HB, 7.15 for 7.30pm, £2 at the door for non-members.

- **The History of Shepperton Studios:** Zoom talk by Nick Pollard. An incredible array of films have been produced at Shepperton Studios – *Goldfinger*, *The Day of the Jackal*, *Bridget Jones's Baby*, *Carry on Camping*, *Black Narcissus*, *Oliver Twist*, *Full Metal Jacket*, *A Night to Remember*, *Stan & Ollie*, *Les Misérables*, *The Heroes of Telemark* ... the list goes on. Thursday, 19th February 7.30pm, <https://www.meet-up.com/Surrey-History-Meetup/>.

For further details of talks and other activities – or to join DLHG – go to <https://dlhg.org.uk>.



DORKING
LOCAL
HISTORY
GROUP

J.CASEY DECORATING & BUILDING SERVICES

PAINTING/PLASTERING/TILING/
PLUMBING/CARPENTRY & GENERAL
REFURB

Office 07733 452 904

Email jcdbs15@gmail.com



**RESIDENTIAL • COMMERCIAL
AGRICULTURAL • SCHOOLS • ACOUSTIC
HOARDING • GATES • SECURITY**

RICHARDSON & BRADS FENCING LTD

T: 01306 640 143 - 01483 414 745

E: INFO@RBFENCINGLTD.CO.UK

W: WWW.RBFENCINGLTD.CO.UK

A: 168 SOUTH STREET, DORKING, SURREY, RH4 2ES

The Art of the Automobile - Roger Mendham

Once, in the early days of automobile manufacture, cars were purely functional - even the most basic of passenger comforts like doors and windscreens were lacking.

By the mid-1920s though, car designers saw an opportunity to express their creativity and automobile design entered a golden age. A new generation of cars, influenced by the art deco movement and the 'Great Gatsby era', led to some of the most famous and fabulous cars ever built. And so it has continued with stylists and coachbuilders inspired by the art movements to create 'mobile works of art'.

The lecture will be held at 10.30 in Martineau Hall. Coffee is available from 9:30am.

Visitors are welcome for a fee of £10.00 but contact Linda Packman ljpackman@gmail.com to book. For more information and details of the forthcoming programme, visit www.theartsocietydorking.org.uk



A-Star Taxis
01306 882299
info@astartaxi.co.uk

**ALL OCCASIONS
ANY LOCATION**

AIRPORTS ★ HOTELS ★ PUBS ★ RESIDENTIAL
 CLUBS ★ 7 SEATER ★ 6 SEATER ★ ESTATE
 SALOON ★ PRESTIGE ★ WHEELCHAIR ACCESS

Becky's Professional Dog Grooming
 City & Guilds Qualified

Find us on Facebook


 • Bathing • Clipping
 • Nails • Stripping

Beare Green, Dorking

Becky Robinson - 07739 263244
www.doggroomingdorking.co.uk

ACQUIS
 Chartered Accountants

ACCOUNTANCY AND TAXATION ADVICE
 TAILORED PACKAGES FOR NEW BUSINESSES
 HELP WITH YOUR PERSONAL TAX

*A small and caring professional team delivering
dependable service and peace of mind*

For more information please contact us on
01306 881884 or email **info@acquis.co.uk**
 The Atrium • Curtis Road • Dorking • Surrey • RH4 1XA




www.acquis.co.uk

SPRING Music Celebration!

Saturday 11th April 2026
4.30pm-6pm
 Holy Trinity Church, Westcott
Family Friendly Music Mingle

Music brought to us by local members of
Dorking Chamber Orchestra, passionate
 about bringing music alive and accessible to
 our village.

<https://www.thedco.co.uk/>



Free to attend with
 Retiring Donations to support future
 village musical activities and access
 to live music for our young people in
 Westcott.

Sign up to let us know your interest
 and to help us with numbers to expect
 and prepare sufficient refreshments.

<https://tinyurl.com/WMC261>

More Info in March!

WESTCOTT HISTORY GROUP

Lonesome Valley and Lodge

Lonesome Valley may well sound as if it was somewhere in the mid-west of the USA but in fact we have one very close to Westcott - you probably know it, but might not be aware of the name. Take the turn left just before the Wotton Hatch and head up Sheephouse Lane towards the hamlet of Broadmoor and you are then effectively going up the Valley, along the bottom runs the Tillingbourne stream which begins life on the lower slopes of Leith Hill.

Always a picturesque area it attracted the attention of a wealthy 18th century gentleman, Theodore Jacobsen (1686-1772), who had made his fortune trading in London with the Hanseatic ports of Northern Europe. He was inspired by the Dorking countryside and the natural beauty of the area between Leith Hill and Wotton

with its streams and ponds and began buying plots of land to build himself a country retreat. By 1740 he had designed and built himself a Palladian mansion, which he called Lonesome Lodge. The Villa Ragona in Italy provided the inspiration for the house and it was finished with sumptuous interior rooms and landscaped around a large pond with decorative fountains and trees on the slopes behind.

Jacobsen had very deep pockets and lavished attention on creating his idyllic summer retreat. He only stayed there for 23 years though and sold the house and the 440 acre estate in 1763 to Jeremiah Joye, a London merchant and stockbroker, for £8,500. Jeremiah died within 3 years and the estate passed to his wife Mary Margaret with an ample inheritance but she chose not to remain there, and in 1767 John Gritton, Jeremiah's nephew, sold the property at auction to David Franco,





Care Before Profit

Nower House

Residential Care Home

Dorking's local Charity,
improving the lives of older people for over 40 years

**Nower House provides excellent care for residents
on either a permanent or respite basis.**



We're here to help,
Call us at **01252 979111**
to find the right care for you

*Nower House | Coldharbour
Lane | Dorking | Surrey |
RH4 3BL*

www.awvs.org.uk

email: marketing@awvs.org.uk

a very wealthy diamond dealer and business man in London, for £10,000. When Franco died in 1778, he left the estate in trust for his daughter Catherine, wife of Daniel Haynes, and her family. He also left many generous bequests to family and staff, including one to The London Hospital. Daniel died at Lonesome in 1787 and Catherine died in 1796. The estate passed first to William, the eldest son until he died in 1804, and then to David until 1811 when it passed to his son Daniel Franco Haynes.

The estate was broken up and sold to Robert Barclay of Bury Hill for £9450 in 1821 but quickly sold on to a Rev Thomas Haughton Harding and renamed Tillingbourne Lodge. Harding did not practise as a clergyman and his tenure was marked by many problems in his family, and by 1840 he sold the Tillingbourne Estate to the Duke of Norfolk for £14,000. He decided to dismantle the Lodge, and using the stone, built a smaller house further down the valley as a Steward's lodge, named Tillingbourne House.

Over the years it was let to a series of tenants including, in the 20th century, the Army and the Youth Hostel Association. By 1960, however, it was deteriorating from dry rot and was demolished and plots



sold off for private development, including the very stylish and modern Tillingbourne House of today. A further two houses have been built in the grounds. The footprint of the original Lonesome Lodge and the remnants of the landscaping remain in the hands of Wotton Estates.

All this, and more, on Lonesome Lodge can be found in an extensively researched book of that name, by local historian Robin Daly who gave us a fascinating talk a few years ago. All proceeds from the sale of the book go to his very worthwhile UK registered charity Yes to Life.

Extensive local history records can be viewed on the Westcott Local History Group website at www.westcottvillage.com/westcott-history-group

GREENWAY HOMECARE

As a family-run care agency, we pride ourselves on the fact that our care professionals were born and live locally, knowing the history and the area, and have a passion for delivering the care that we would have wished for our parents.



GREENWAY
HOMECARE

We believe that by offering our clients more choice, we enable them to maintain their independence, ultimately allowing them to prosper. Anything we can do to make their life easier can only be beneficial, from preparing a well-balanced nutritional meal to picking up prescriptions.

Whether you are a private client or funded by Social Services, you can benefit from person-centred care that you will come to expect from Greenway.

- No missed calls
- Staying the length of the call
- Continual investment in its care professionals, from a Wheelchair Access Vehicle to an ELK (a lifting cushion designed to lift a fallen person).

Paying for social care using direct payments?

If you or someone you care for gets help from Social Services, you can apply for direct payments. These let you choose and buy the services you need yourself, instead of getting them from Social Services.

If you receive your care from Social Services, and you would like to know more about moving to Greenway Homecare, by using direct payments, please contact us today for a free information pack.

Tel: 0333 772 2361 office@greenwayhomecare.co.uk
Greenway Homecare: 3 Guildford Road, Westcott, Dorking. RH4 3NR

South East TREE surgeons

South East Tree Surgeons are a **Family-Run** business & offer an individual, personal service. We have been established over **22 years**.

We provide a **24 Hour Emergency Service** to Commercial businesses, local councils & private individuals. We offer Free written quotations & **advice** without any obligation.

Our Tree Surgery teams are **Friendly, Qualified & insured**. You can find out more about us on our website:
www.southeasttreesurgeons.co.uk

Please do contact us on 01306 712 200
Or email us at: info@southeasttreesurgeons.co.uk

BUY, SELL or LET
your property with...



Local People • Local Knowledge • Local Experts

Seymours Dorking

01306 776674

sales@seymours-dorking.co.uk
lettings@seymours-dorking.co.uk

27 South Street, Dorking, Surrey RH4 2JZ

www.seymours-estates.co.uk



Mole Valley Ramblers Spring Walk Festival, Wednesday 26th April to Wednesday 6th May 2026

Mole Valley Ramblers' week-long Walking Festival is a friendly event, ideal for all ages. Experienced walk leaders will guide you.

With up to three walks a day planned, from the leisurely, moderate, and longer, more strenuous walks, including some evening walks with a short pub stop.

You'll find full details of upcoming Festival walks on our programme at www.molevalleyramblers.org.uk



Rob Tomlinson
Mole Valley Ramblers



What are “Baby Meals”?!

Westcott “Baby Meals” is a highly valued community initiative running for over 25 years. The fabulous volunteer cooks buy, cook and deliver a (free!) hot meal for families a new baby, usually for 2 weeks. So during the new baby chaos, dinner is one less thing to think about!

If you're expecting a baby, or if we can help with a few home cooked meals during a challenging time please get in touch, we're always happy to help!

Or if you'd like to join our cooks list (there's no obligation, just sign up to rotas as and when you can!), please let us know!

Anna: 07710 425487 annakemkers@hotmail.co.uk

Surrey Hills

Solicitors

Surrey Hills Solicitors offer a wealth of legal experience in key areas and sectors including:

- buying, selling, leasing property
- resolving a dispute
- problems with employment
- forming a charity or a business
- divorce and relationship issues

Our approachable and committed solicitors will discuss and assess your needs and find the right solution for you.

Oak Green House, 250-256 High Street,
Dorking, Surrey RH4 1QT

01306 877592

enquiries@surreyhillssolicitors.co.uk
www.surreyhillssolicitors.co.uk



HANNAH SCHELLANDER

CLINICAL HYPNOTHERAPY & TRAUMA THERAPY

ANXIETY & PANIC ATTACKS

FEARS & PHOBIAS

TRAUMA & PTSD

CONFIDENCE

SLEEP PROBLEMS

UNWANTED HABITS

WEIGHT MANAGEMENT

07846 508117

WWW.HANNAHSCHELLANDER.COM



BRAMLEY EST. HOUSE 1984

RESIDENTIAL REST HOME

**Westcott Street, Westcott
Dorking RH4 3NX**



Bramley House is a residential home from home set in beautiful grounds nestled in the heart of the Surrey Hills. We pride ourselves on tailoring to all levels of residential care needs from respite breaks and companionship reasons through to dementia and more complex requirements.

- 24 hour care and support
- 16 delightful rooms
- Friendly caring staff
- Freshly prepared meals
- Permanent & respite stay
- Varied activities and outings

Tel: **01306 740003** • Email: info@bramleyhouse.net
Web: www.bramleyhouse.net





**WESTCOTT
VILLAGE HUB**

WESTCOTT VILLAGE HUB CIC
ST JOHNS CHAPEL FURLONG
ROAD WESTCOTT RH43PP

EAT - SHOP - REFILL - SHARE

WESTCOTTVILLAGEHUB.CO.UK

A community-driven Hub offering both volunteering opportunities and paid positions. Our goal is to foster a safe environment for individuals and groups to connect. We house a community fridge, a café, local crafts, sustainable produce, and a community garden. Additionally, we offer "Advice First Aid" in partnership with Citizens Advice and assist in maintaining the building that serves as our home.

OPENING HOURS

MON – WED
10:00am - 2:00pm

THU-FRI
8:00am - 4:00pm

SAT
10:00am - 2:00pm

For upcoming events and activities visit the website, opening hours change during school holidays.

HISTORICAL EVENTS IN FEBRUARY

1st February 1901

The royal yacht *Alberta* brings the body of Queen Victoria into Portsmouth harbour en route to her funeral in London the next day. The Queen, aged 82, died on January 22nd, at Osborne on the Isle of Wight.

2nd February 1665

British forces capture New Amsterdam, the centre of the Dutch colony in North America. The trading settlement on the island of Manhattan is renamed New York in honour of the Duke of York, its new governor.

4th February 1927

Malcolm Campbell sets a new world land speed record of 174 mph (278 kmph) at Pendine in Wales.

8th February 1587

Mary, Queen of Scots is beheaded on the orders of her cousin, England's Queen Elizabeth I.

11th February 1975

Margaret Thatcher becomes the first woman leader of the Conservative Party.

15th February 1971

Shillings, bobs and half-crowns all disappear as Britain's currency goes decimal.

21st February 1804

British engineer Richard Trevithick demonstrated the first steam engine to run on rails.

22nd February 1797

Around 1,400 French troops attempted to invade Britain, landing on the Welsh coast. The determined ladies of Fishguard helped save the day.

26th February 1797

The Bank of England issues the first ever one pound note, in part a result of the panic in London caused by the French invasion of Fishguard.

WORDSEARCH

C	R	P	Y	P	R	I	M	R	O	S	E
M	W	S	W	I	N	T	E	R	H	K	L
A	O	U	D	S	E	N	C	P	S	A	E
Q	C	H	O	C	O	L	A	T	E	F	N
U	B	R	I	E	S	G	V	N	K	L	T
A	J	T	A	S	H	E	I	S	A	O	D
R	F	Z	W	D	X	T	Q	W	C	W	V
I	H	O	B	L	N	Y	J	M	N	E	F
U	N	A	L	E	A	P	Y	E	A	R	L
S	I	S	L	T	O	B	T	L	P	S	Z
Q	E	A	M	E	T	H	Y	S	T	U	N
G	V	X	E	K	D	A	R	W	I	N	A

Words to find:

Amethyst
Aquarius
Ash
Chocolate
Darwin
Flowers
Leap Year

Lent
Pancakes
Pisces
Primrose
Snow
Valentine
Winter

DORI VANA PLUMBING

Bathroom renovations
and all plumbing services



07977 220465 / 01306 887282
dvanaplumbing@gmail.com



**ARTISAN COFFEE &
CAKES IN THE WOODS**

Friday to Sunday 9 - 3pm



Mad Horse Copse Farm • Logmore Lane
Westcott • RH4 3GB
Mob: 07817269565

Accessible on Foot Only • No Parking On-site

PORTER & COMPANY

Independent Financial Advisers

Independent Financial Adviser

Dorking

t: 01306 644 695

e: simon.porter@porterifa.co.uk w: porterifa.co.uk

Porter & Company (IFA) Ltd is an Appointed Representative of
Best Practice IFA Group which is authorised and regulated by the
Financial Conduct Authority

Our creative minds have been whirling and what with the post over Christmas bringing us many a cardboard box or tube we decided we just had to build something. And build we did! At present we have sculpted and painted our way to a stunning St James' Church and a wonderfully rustic Abinger Hatch. Then moving on from buildings we felt we needed a marvellous marble run so we transformed some tubes and

A young girl in a purple and gold costume is standing next to a man dressed as Santa Claus. The girl is holding a small object in her hands. Santa Claus is sitting on a chair, holding a large green gift bag. The background is a simple room with a white wall and a wooden floor.

Kate Fairbrass

BRING YOUR CARPETS AND UPHOLSTERY BACK TO LIFE!

Based in
Westcott

Professional Carpet & Upholstery Cleaning



Family-run, Reliable and Trusted.

£ Prices from £40 per room

📞 0333 041 3039

www.primapropertyservices.co.uk

Google
Reviews ★★★★★

ncca
NATIONAL CARPET CLEANERS ASSOCIATION
ASSOCIATE MEMBER 6186

PRIMA
PROPERTY SERVICES

LCM

Architecture
and Interiors

Architects and Interior Designers

Architecture practice
in Westcott with a
passion for residential
design in the Surrey Hills

Contact:
www.lcmarchitects.co.uk
info@lcmarchitects.co.uk
tel. 07777656034



I do hope everyone got through January which is often the most difficult month of the year after the Christmas festivities and meeting up with friends and family. However the signs of life are very apparent at the woodland. There are spring bulbs popping up all over and buds on some of the trees already. I also saw a couple of blue tits eyeing up one of the bird boxes!

We have a big fundraising event for the QRMW Charity in April which is keeping us very busy indeed. It's The Reverse London Marathon which one of our Trustees organises very successfully, with this year being the third taking place overnight on 26/27th April (the night before the London Marathon). It has become extremely popular for those who have not been able to obtain a place in the daytime Marathon and amazingly last year there were some participants who did both events! This year the clothing being made for participants of the Reverse Marathon is selling incredibly well and £4 from each item sold is donated to QRMW. But we have to coordinate all of the orders, parcel them up and send them out - to date we have over 600 orders! Also a number of QRMW Trustees are marshalls and will be on duty at various locations on the route in London overnight. We did it last year and it is good fun cheering on the runners as they come past us and take a handful of sugary sweets to keep up their energy.

In June we celebrate our 12th Anniversary of the opening of the Woodland and we will be holding a Commemoration Service at the Woodland on Saturday 6th June when families will be honouring a number of Veterans who are no longer with us by planting a young tree. During this event we will also be celebrating 'D' Day and 60 years of the Queen's Regiment.



We have some entertainment lined up, a military band and a duo who will be singing the songs of the 1940s. There will be lots of stalls with some goodies and a grand raffle plus a big BBQ and a Bar. This event is open to everyone so do put the date in your diaries and look out for more details in due course. All proceeds from this day go into the Memorial Fund to assist our Veterans in need. Your support is so important and appreciated.

Do remember if you fancy a walk during the months leading up to June the woodland is open 24/7 and if I am there the kettle will be on! I look forward to seeing you.

Paul Cooling, Chairman
The Quick Response Memorial Woodland
Registered Charity No 1174651

Westcott
Village

Community Fridge

Take what you need,
give what you can.

Opening Hours

- Tuesday 2.15-2.45pm,
St Johns Chapel.
Arrive early! Meet
your neighbours and
have a good chat!
- Westcott Village Hub,
We 12-4, Th 10-4,
Fr-10-7, Sa-10-2.

www.mscfridges.org/



**WESTCOTT
VILLAGE HUB**

WESTCOTT HUB



**MID SURREY
COMMUNITY FRIDGES**

ST JOHNS CHURCH



These beautiful winter photos were taken by Fiona Humphrey at Landbarn Farm, aren't we lucky to live somewhere so picturesque? If you have been out and about and have any pictures to share, send them in to editor@westcottmag.com.





Westcott Village Hall

The Perfect Venue for any event

The Westcott Village Hall, previously the Reading Room, is in the heart of the village of Westcott, in the Surrey Hills. It is a flexible space with diverse amenities available for hosting classes, parties, meetings and functions.

Amenities and the venue:

- 1 x large hall (100 people)
- 1 x meeting room (8 people)
- Drop down projector screen
- Wi-Fi
- Gas heating
- Fully equipped kitchen with all amenities + tableware for 85 people
- 17 large trestle tables + smaller tables and chairs for 100 people
- Large car park onsite
- Full alcohol licence

Hire rates

These depend on when you hire, and discounts are given to regular users. Rates start at £8 per hour (minimum 4 hours' booking), please contact our Booking Secretary Deborah on info@westcottvillagehall.com to discuss.

The current village hall is likely to be redeveloped within the next 1-2 years, replacing it with a modern, flexible, sustainable community facility. We will give our users at least 6 months' notice of the anticipated closure date so that everyone will have enough time to secure a replacement venue during the building period.

Mobile: 07967 286636 Email: info@westcottvillagehall.com
www.westcottvillagehall.com

Pippbrook Bowls Club

*Pippbrook Bowls Club is a friendly and sociable Club
OPEN DAYS 2.30pm 18th, 25th April
and 3rd May 2026*

*Free roll up 6pm Tuesdays. All welcome
Earlybird Half Price subscription
richardjrode@gmail.com 07396105358
www.pippbrookbowls.co.uk Facebook*



TAKING A BREAK IN 2026

After 10 years of WESTfest, the team are taking a much needed break in summer 2026. We'll be back in 2027.

WESTfestivity the Westcott Christmas Fair
will run as normal on Sat 14 Nov 2026.

westfestsurrey@gmail.com

remedial roofing

• provided or intended for people with roof issues and deficiencies.
"remedial roofing"

We specialise in:

New roofs,
slate & tiled roof
specialists

All roof repairs,
moss removal &
gutter clearance

Flat roofs,
traditional felt &
GRP fibreglass

New uPVC
Fascia, soffit &
guttering

→ ALL WORK
GUARANTEED



Average Score 10/10

Recommended, vetted & monitored local traders and service providers. Recommended by previous customers, vetted by Checkatrade, monitored via customer feedback. Obtain an up-to-date report of [remedial roofing](http://www.checkatrade.com) on www.checkatrade.com

Checkatrade
Where reputation matters



Call us today for a FREE quotation on:

01306 304736 | 07852 833802

info@remedialroofing.co.uk

www.remедialroofing.co.uk



Westcott Garage LTD
Guildford Road, Westcott, RH4 3QE
01306 885379



- Friendly and knowledgeable staff
- Superb and reliable service
- Guild of Master Craftsmen member
- MOT's arranged

A new Parish Council for Westcott

www.molevalley.gov.uk/cgr/

Mole Valley District Council launched a Community Governance Review in July to review how local communities right across the district are represented and whether changes are needed. They ran a 12-week initial consultation posing a number of questions to draw out views on whether new Parish Councils should be created where they do not currently exist (such as in Westcott) or whether existing Parish Councils should be merged, altered in some way or things should be left as they are. Parish Councils are democratically elected and have a range of powers and responsibilities relating to local matters including planning, community amenities and representing the views of residents.

Shape the Future of Your Community



This is your opportunity to influence how local decisions are made.

Responses to the consultation were reviewed by the MVDC Devolution Working Group and further information including the Council's report can be viewed on the Community Governance Review pages of the MVDC website <https://www.molevalley.gov.uk/cgr/>

As a result of the initial consultation we are pleased to report there was a strong recommendation for a new Parish Council to be created in Westcott made up of nine Councillors, along with new Parish Councils in Ashted, Boxhill, Dorking, Fetcham, Leatherhead and Westhumble. MVDC will now consult further on these recommendations and all households in the areas affected will be asked to respond to a postal ballot on whether they agree to a Parish Council being set up.

At the time of writing the timing for a postal ballot in Westcott is unknown as it is due to be discussed at a Council meeting on the 13th January. As one option being considered is to proceed immediately, by the time you are reading this magazine you may have already received a postal ballot through your door! If so, please ensure you send in your ballot form in plenty of time.

If the outcome of the postal ballot is agreement to proceed then Westcott residents will need to put themselves forward as potential Parish Councillors and stand for election in May 2027. The WVA will hold an Open Meeting in due course where we will ask MVDC representatives to explain the next steps and the process moving forward, the date for this

A club for...



Everyone
Everyone
Everyone
Everyone



www.dltsc.co.uk
e: enquiries@dltsc.co.uk
t: 01306 879843

Ridgeway Road, Dorking RH4 3AT

JACKSON-STOPS 

DORKING MUSEUM

Open Meeting will be published via newsletter, notice boards and social media once it is known.

Westcott Neighbourhood Development Plan (WNDP)



Following feedback received during the consultation

run by the Westcott Village Forum in October and November, a revised Westcott Neighbourhood Development Plan, taking account of that feedback, has been put out to a further consultation this time run by Mole Valley District Council. The MVDC consultation closes on 2nd February 2026. All the documents can still be viewed on the Neighbourhood Development Plan pages of the Westcott Village website, including a Consultation Statement which details all the feedback that was received through the Village Forum's consultation and what action was taken as a result.

Following MVDC's consultation the Plan is then submitted to a Planning Inspector who will review all the documentation for compliance with the process. The Plan is then put to a public referendum in the village where all households are asked to vote on whether they want the Plan to be

adopted and come in to force. Once adopted the new Neighbourhood Plan will replace the existing one and become part of the MVDC Development Local Plan to be taken into account in the determination of planning applications in the area.

Christmas Carols on the Green

On a lighter note, we are pleased to report that £255 was raised at the Christmas Carols on the Green event which has been donated to the charity Crisis on behalf of everyone in Westcott. It is a real team effort to put on the event which is now firmly established as a favourite in the Westcott calendar, our thanks once again to all those involved.

Highways queries to Nick Lund
highways@westcottvillage.com

Planning queries to Paul Goddard
planning@westcottvillage.com

Treasurer queries to Magesh Ramakrishnan
treasurer@westcottvillage.com

Westcott Village Association Committee
Jo Astor, Jane Betterton, James Croft,
Paul Goddard, Nick Lund, Magesh
Ramakrishnan
contact@westcottvillage.com

<h1>JAZZ2</h1> <p>SOPHISTICATED DINNER JAZZ</p>			
<h2>THE BEST OF SOPHISTICATED, MELODIC JAZZ</h2>			
<p>Add a little musical magic to your garden party, anniversary, charity event or any kind of celebration, indoors or outdoors.</p>			
	<div data-bbox="736 446 1038 518"> <p>Featuring Ralph Sutton (piano) Cathy Williams (vocals)</p> </div> <p>Let JAZZ entertain you and your guests with the best in sophisticated, melodic jazz.</p>		
<p>GREAT MUSIC ♫ EXCELLENT SOUND QUALITY ♫ REASONABLE FEES</p>			
<p>www.JAZZ2.co.uk</p>	<p>Call or email Ralph Sutton for a chat about your requirements 📞 07836 275102 ✉ ralph@connectusuk.com</p>		

Ambient

Electrical Services

- New electrical installations
- Lighting design / installations
- Full and partial reviews
- Consumer units upgrades
- Security / Garden lighting
- Smoke alarm installations
- Additions and alterations
- Electrical installation condition reports

Checkatrade.com
Where reputation matters

Office: 01306 252100 | Mobile: 07502 264108
Email: mjsyred@yahoo.co.uk
www.ambientelectricalservices.co.uk

Dorking Decorators

PROFESSIONAL PAINTERS & DECORATORS

Established Local Family Business

- 🔧 Over 20 Years Experience
- 🏠 Internal & External
- 🏢 Commercial & Domestic
- 👨‍🔧 Friendly, First Class Service
- 📍 Surrey / Sussex / Greater London

**FREE ESTIMATES
CALL**

01306 640418

www.dorkingdecorators.co.uk

Proud members of
Checkatrade.com
Where reputation matters

DORKING MUSEUM

Hidden in Stone: Dorking's Dinosaur Discovery:

The Museum's new exhibition celebrates Dorking's contribution to the developing understanding of the wild life that roamed the area 125 million years ago. At that time, the Dorking area was part of a vast tropical river delta with swamps, sand flats and lagoons that extended across much of what is now South-East England and the Isle of Wight. Extreme seasons and changing conditions resulted in the evolution of amazing species and the Wealden clay has yielded much evidence of the dinosaurs that evolved.



A discovery of a giant claw by fossil enthusiast Bill Walker in a quarry near Ockley in 1983 led to the excavation of an almost complete skeleton which resembled a crocodile that stood up on its hind legs. This provided evidence of a previously unknown dinosaur species and led to the recognition



of a new group of specialised fish-eating dinosaurs. The creature was given the scientific name *Baryonyx walkeri* in honour of its finder and provided the key to understanding more fragmentary remains of similar dinosaurs that were being unearthed on other continents. They became known as Spinosaurids because some had elongated neural spines and they had a semi-aquatic lifestyle based on hunting fish and scavenging whatever they could find.

The fossilised skeleton found by Walker – and dubbed 'Claws' by the media at the time – is now on display at the Natural History Museum. Four decades on from the discovery, two new *Baryonyx* cousins have been found in the cliffs of the Isle of Wight, and maybe other unknown species are still down there in the clay.

The new exhibition explores Dorking's dinosaur connections in greater detail, displays including

Bullimores



Accountants for Life

**Tax • Accounts • Probate
Inheritance Tax &
Executorship**

T: 01306 880880

E: partners@bullimores.co.uk

W: www.bullimores.co.uk

Bullimores LLP licensed to carry out the reserved legal activity of non-contentious probate in England & Wales by the ICAEW



Surrey Downs Tree Care is based in Westcott with over 30 years of experience

All aspects of tree care and hedge management undertaken

Contact us on 07855232552

Email Surreydownstc@gmail.com

Building Plans

For Home Improvements & Extensions

Many local projects completed
Planning & Building Regulations Approvals
Fast Efficient Service

"Established over 30 years"

MICHAEL LLOYD

CEng MICE MIHT

Phone: 01483 205479 or 07958 791402

For free consultation

J.A. JOINERY

TRADITIONAL CARPENTRY & JOINERY

FRIENDLY, RELIABLE AND TRUSTWORTHY
FOR FREE ESTIMATES & ADVICE

CALL JAMES ON

HOME: 01306 621193

MOB: 07989 585707

EMAIL: james@aylingjoinery.co.uk

www.aylingjoinery.co.uk



DO YOU HAVE A PEST PROBLEM?

Our technicians are fully trained
in the removal of:

**RATS • MICE • WASPS • SQUIRRELS
FLIES • MOLES • COCKROACHES**

for
**Domestic & Commercial, Schools,
Housing Associations & Agriculture**

Call **FREE** on **01483 203823**

LICENSED WASTE MANAGEMENT SERVICES

info@emwoodpestcontrol.com
www.emwoodpestcontrol.com



DORKING MUSEUM (cont.)

lifelike replica models on loan from the University of Southampton. Takeaway model templates of Dorking's most famous dinosaur are available to go with the exhibition.

28th February, 10am-2pm. Free, materials provided and children must be accompanied.

Get involved:

Museum Saturday Family Activities at Dorking Library:

The Museum is pleased to continue its collaboration with Dorking Library in a series of monthly events linked to library themes. *Chinese New Year*: Make a horse mask or Chinese lantern to celebrate the year of the horse: Saturday 14th February, 10am-noon.



Create a Blue Plaque for yourself: What are your hopes and dreams? How would you like to be remembered in the future? Create a blue plaque to commemorate the life you hope to lead: Saturday

The Museum depends on its enthusiastic team of volunteers to maintain this valuable community resource. Maybe you could spare a few hours a month, with opportunities in an interesting range of key roles with flexible working in the Museum, in the community or from home. Perhaps you could help maintain our collections, recruit and train volunteers, maintain our website, train as a guide on our walking tours, organise events, welcome visitors, help with maintenance or be a trustee. See dorkingmuseum.org.uk/about/volunteer-opportunities for further details.

Dorking Museum, 62 West Street. Thursdays 1pm-4pm, Fridays and Saturdays 10am-4pm, free entry. www.dorkingmuseum.org.uk. Visit dorkingmuseum.org.uk/digital-guide/. 01306 876591.





CRAFT WITH COMMUNITY

BRING YOUR OWN CRAFTS PROJECT

**7:30-9:30PM THURSDAYS
WESTCOTT HUB**

5TH & 19TH FEB 2026

SNACKS AND DRINKS PROVIDED
SUGGESTED DONATION £5



7th at 12.00, lunchtime recital at St Martin's church

7th at 5.30, Dorking Chamber Orchestra at St Nicolas' church, Bookham

7th at 7.30, English Chamber Orchestra at Dorking Halls, £20-30, 01306 740619

9th at 7.15, ballet screening at Dorking Halls, £19.50, 01306 881717

17-21 at 7.30, DDOS Joseph and the Amazing Technicolour dreamcoat, £22-24, 01306 881717

The Dorking Concertgoers Society is delighted to be able to host the English Chamber Orchestra to play in Dorking. This excellent and well-known ensemble has a very attractive programme, including Vivaldi's *Four Seasons* and Mozart's *Eine Kleine Nachtmusik*, alongside concertos by Bach and Handel.

The Dorking Chamber Orchestra, playing in Bookham, has a concert including Haydn's *Farewell symphony* and Mozart's *Sinfonia concertante*, with solo parts for violin and viola. There will also be music by Telemann, and Pachelbel's famous *canon*.

The lunchtime recitals at St Martin's church continue with a concert given by cellist Chloe Chen. Together with her pianist they will play Beethoven's *cello sonata op.69* along with music by Fauré, Martinu and Edith Piaf.

The Dorking Dramatic and Operatic Society presents its major production of the year, a week-long run of Andrew Lloyd Webber's *Joseph and the Amazing Technicolour Dreamcoat*. As well as the evening performances, there is also a Saturday matinee.

The Royal Ballet's production of *Woolf Works* will be screened at the Dorking Halls. Created in 2015 for the Royal Ballet and directed by Wayne McGregor, this is a collage of themes from the works of Virginia Woolf.



Ian Codd

BRAY ESTATES

PROPERTY CONSULTANTS

ESTD 1994

CHARTERED SURVEYORS

We are qualified and experienced chartered surveyors providing a personal tailored property consultancy service to our clients.

We are equally at home in town or country and have all the necessary expertise and adaptability to succeed in satisfying our clients' requirements.

- **Chartered Surveyors**
fully qualified and regulated
- **Property Managers**
commercial, estate, and unique
- **Fixers**
solving issues, building defects, adding value, general advice
- **Registered Valuers**
market, charities act, probate, divorce, lending



☎ 01306 740837 | ✉ office@brayestates.co.uk

🌐 www.brayestates.co.uk



**Dave Ford
Tree Care**

Professional
Arborists

Contact us for a free quotation:

T: 01306 888 441

E: info@davefordtreecare.co.uk

www.davefordtreecare.co.uk

Tree Felling | Pruning | Planting |
Stump Grinding | Hedgerow
Management | Emergency Work |



LOCAL PAINTING AND DECORATING COMPANY

House Painting * Windows * Doors *
Ceilings * Walls * Frames
Paper Hanging

SURREY TRADING STANDARDS APPROVED

FREE WRITTEN QUOTATIONS

FULL LIABILITY INSURANCE



Proud members of
Checkatrade.com
Where reputation matters

07876 130 016

jhnsmthrs@aol.com

jspaintingandbuildingservices.co.uk

M.F. Decorating & Building Maintenance

We are a small family run business,
second generation, with over 60 years experience,
living and working locally in the village of Westcott



Our services include:

- Internal/external painting & decorating
- Wallpapering
- Building maintenance (internal & external)
- Plastering/plaster boarding
- Free estimates

For any enquiries please contact Adrian:
Phone: 01306 882083 Mobile: 07958 712522
Email: adrianfewings@googlemail.com



GREEN WESTCOTT

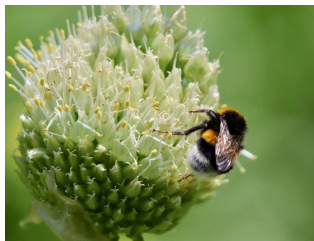
National Emergency Briefing

Last November in Westminster Central Hall, MPs, business leaders, cultural figures and faith and community leaders gathered to hear experts present powerful evidence of the interconnected threats facing the UK.

The National Emergency Briefing on the climate and nature crisis was an invitation only event where experts – in fields ranging from economics and health to national security - gave stark science-based assessments of the situation and the scale of action needed to adapt to the rapidly changing climate and ecological situation.

An honest conversation

"The UK is facing a national emergency not only because the climate is changing, but because



the living systems that regulate that climate, protect our

homes, and feed our people are breaking down. This is exposing our country to escalating risks: floods,

fires, heatwaves, food insecurity, and economic instability. ...This is not an environmental issue on the margins of policy. It is a national security issue." (Nature - Prof Nathalie Seddon). Nature is not a 'nice to have', it is critical national infrastructure.

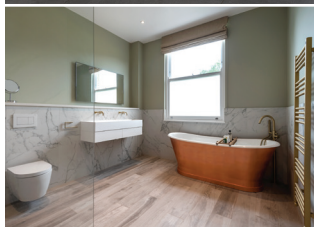
The climate crisis is a "threat multiplier, making existing threats worse or more frequent and fuelling new ones – climate shocks fuel global instability...Competition for water, food and land is rising.... [we are] not yet acting as if peace and addressing climate crisis two sides of same coin." (National Security - Lt General Richard Nugee CB CVO CBE).

Emergency doctor, Prof Hugh Montgomery OBE, contributed to the report which led The Lancet to declare that 'Climate change is the biggest global health threat of the 21st century' in 2009. He says "We were pointing out risk, but we weren't adequately pointing out the hazard – because I don't think any more it's about risk - it's about survival."

Prof Paul Behrens added that the crisis presents "a threat that will affect every family...a threat for which we are woefully unprepared ...the increasing pressure on global food supplies in the face of accelerating climate change and nature loss....



Quality Craftsmanship & Reliable Project Delivery



We're a small, highly-skilled team, with over 20 years of experience in the UK construction and plumbing industries.

We specialise in delivering high-quality residential building services, taking on both large-scale and smaller residential projects across Surrey and the surrounding area.

Known for being honest, friendly, and reliable, we take pride in delivering every project to a high standard – with no hidden costs and no compromises on quality.

Our expertise includes:

Extensions

Full Home Renovations

Bathroom & Kitchen Installation

Decorating & Wallpapering

Let's turn your vision into something special!

To learn more about the possibilities for your very own home makeover, get in touch with us today.

☎ 01306 252266 or 07714 789660

✉ info@abinger-construction.co.uk 🌐 www.abinger-construction.co.uk



UNPARALLELED CRAFTSMANSHIP • TRANSPARENT COMMUNICATION • SUSTAINABLE CONSTRUCTION



GREEN WESTCOTT (cont.)

What concerns me most...when families can't afford to feed their children, societies break down."

The scale of action required

"We risk sliding into a state of permanent crisis management. Every year we delay urgent investment in resilience and emissions reductions, the window for successful action gets smaller...Until we stop burning fossil fuels, extreme weather will continue to get worse. So, cutting emissions isn't enough. It isn't a choice. We must also adapt to protect people and livelihood" (Extreme Weather – Prof Hayley Fowler).

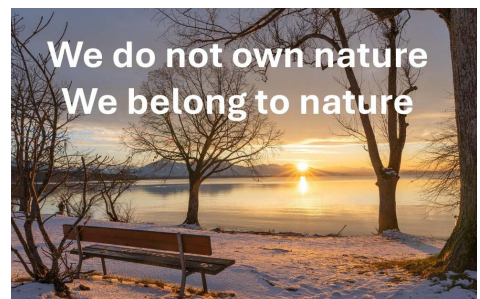
"What would reducing emissions have to look like? ...Well, firstly, technology...technology is absolutely a prerequisite of delivering on Paris [climate agreement], but after choosing to fail on climate change by our leaders for the last 30 years is now far from sufficient. We also need...profound shifts in our social norms." (Climate – Kevin Anderson).

"We currently produce and consume in a way that doesn't factor in our impact on the planet. And that is an economywide problem." (Economics – Angela Francis). Our

economic system is unravelling the web of life that it depends on: subsidising pollution; rewarding short-term extraction, discounting the future.

Additionally, the system that we rely upon to feed us "is also undermining foundations that we depend upon. The food system itself is damaging the very foundations of our food security. It's a large driver of the UK's greenhouse gas emissions – it drives catastrophic habitat loss, pollutes our water, pollutes our air, depletes our freshwater, drives antimicrobial resistance and creates the conditions for the emergence of new pandemics." (Food Security – Prof Paul Behrens). Animal agriculture in the UK occupies 85% of agricultural land and relies on extensive land use overseas for imported feed and livestock. It drives 80% of the UK's agricultural emissions and causes the majority of biodiversity loss.

"Without a functioning economy,



Get IT Fixed Get IT Connected

Expert Repair & Maintenance



Call now on 07710 147512

Brockham based. No call out charges.
Fully transparent quotations with no hidden costs.

ChalkHill Systems
www.chalkhillsystems.co.uk



We make technology work for you

Ready to Feel Fitter, Stronger, More Able?



1-1 PERSONAL TRAINING & COACHING WITH PAUL

Build new skills in privacy
and at your own pace



- Improve stamina
- Build strength & confidence
- Enhance weightloss & wellbeing

Paul Dersad

BOOK A FREE LOCAL DORKING MEETUP TODAY

07858 731890 | paul@revitalisefitness.com

www.revitalisefitness.com

Premier Gardens

Garden Maintenance

Garden and Grounds maintenance throughout the year

- Complete lawn care & mowing
- Granular & liquid lawn fertilisers
- Moss control & complete weed treatment
- New poly-S technology
- Border maintenance
- Fruit trees pruned
- Hedge trimming
- Leaf clearing
- Hard stand jet washing
- Turfing & seeding
- Plants supplied and planting

Complete garden and grounds maintenance and clearance

For more details on all services and my 3-stage lawn-care programme see website

www.premiergardensdorking.co.uk • davidpremiergardens@gmail.com

Mobile: 07887 511 515



STIHL
HAYTER
MAKERS OF THE FINEST MOWERS



GREEN WESTCOTT (cont.)

without food supply available to us, we cannot run a health service. We cannot have health....I recognise an emergency. This is one...There may be no liveable future for us and our children...we haven't got time for doing a little bit of recycling, we need transformational change now if we are going to survive." (Health, Prof Hugh Montgomery OBE).

Act Now

Many of the speakers at the briefing highlighted how many actions that help tackle the crisis have clear benefits for human health and wellbeing.

Energy Transition - *"Thankfully the evidence is clear that an energy system powered by renewables, will indeed be more affordable and more economically secure.... we also know how to get there ...in a way that is genuinely just for ordinary people."* (Energy Transition – Tessa Khan).

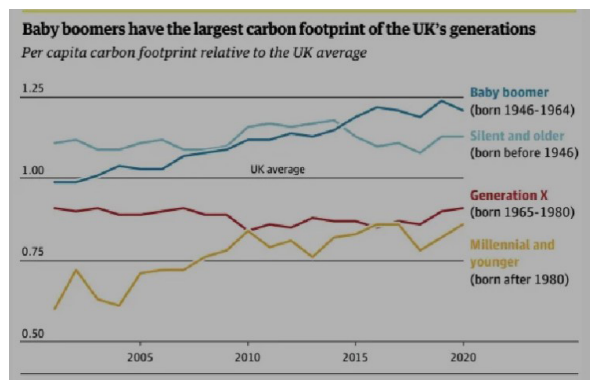
Economy - *"We need to stop funding harm and we need to reward restoration...We have to end these subsidies [that support pollution] and apply a simple universal test to spending and investment - does this harm the biosphere, or can it help*

it?" (Nature – Prof Nathalie Seddon).

"We need to consistently reward the businesses that are doing the work to be competitive in a new world where success includes lowering carbon, restoring soils, keeping forests standing, circular use of resources, and less waste. All things that add to our resilience." (Economics – Angela Francis).

Adaptation - *"And adaptation pays for itself. Every pound we invest now saves many more pounds in avoided damage and disruption. And it also creates skilled jobs. Adaptation is a triple win – good for the economy, good for communities and good for nature."* (Extreme Weather – Prof Hayley Fowler).

Plant-rich diets – *"Scientific consensus is clear that moving to a plant-rich diet is one of the most impactful actions that individuals can take"*





SURREY HILLS
HEATING LTD

DOMESTIC BOILER
SERVICING AND
BREAKDOWN

OIL, LPG & GAS BOILERS



LPG



Call Dathan on: 07944 575970
sales@surreyhillsh heating.co.uk
www.surreyhillsh heating.co.uk

Shiers Decor

Painters and Decorators

Working in Westcott
since 1980

Our repeat clients prove our
Quality and reliability

Phone for free estimates and
local references

gary.shiersdecor@hotmail.co.uk

Tel: 01306 876110

Mobile: 07880848459



Spring Reach
Nursery

01483 284769

info@springreachnursery.co.uk
www.springreachnursery.co.uk



VISIT SURREY'S FINEST NURSERY

Just 5 mins from RHS Wisley



(Food Security - Paul Behrens). This would reduce emissions, help bring a healthier population - reducing pressure on the NHS, free up land for nature and climate resilience.

New social norms - *"Targeting a climate resilient, sustainable world involves fundamental changes to how society functions, including changes to underlying values, worldviews, ideologies, social structures, political and economic systems, and power relationships."* Intergovernmental Panel on Climate Change.

The energy footprint of the wealthiest 10% in the UK is nearly five-times higher than the lowest 10% (Climate – Prof Kevin Anderson) Those of us in these households therefore have more ability – and responsibility - to act to cut these discretionary emissions. There is also a generational divide with baby boomers (born 1946-1964) having the largest and growing carbon footprints, significantly higher than generation X and millennials. (Guardian graphic, source: Dr Anne

Owen, University of Leeds).

The National Emergency Briefing website has more information and recordings of each of the expert contributions: health; food security; nature; energy transition; weather extremes; climate; tipping points; economics; national security. You may like to add your name to the open letter calling for a televised emergency briefing to the nation like we saw during the pandemic (<https://www.nebriefing.org/open-letter-keir>)

Do feel free to get in touch at info@greenwestcott.org to share your thoughts, or with suggestions for future articles.

Jakki Phillips

Fully referenced versions of this and other articles are available at <https://greenwestcott.org>



ADVERTISERS' INDEX

A-STAR TAXIS	24	EMWOOD Pest Control	48
ABINGER CONSTRUCTION	54	FLOWERS BY ELAINE	18
ACQUIS Chartered accountants	24	GB FENCING AND TREE SURGERY	14
AMBIENT Electrical Services	46	GREENWAY HOMECARE	28
ANTHONY WAKEFIELD Insurance broker	20	HANNAH SCHELLANDER Hypnotherapy	30
ATTUNE REFLEXOLOGY	10	HELEN THOMAS Garden Design	16
BECKY's professional dog grooming	24	HOME INSTEAD	10
BRAMLEY HOUSE Residential home	30	J A JOINERY Traditional carpentry	48
BRAY ESTATES Property consultants	52	JAMES CROFT Wedding Photography	12
BULLIMORES Chartered accountants	48	J CASEY Decorating & building services	22
CHALK HILL SYSTEMS IT repair and maintenance	56	JAZZ Sophisticated jazz	46
COFFEE IN THE COPSE	34	JS PAINTING & BUILDING SERVICES	52
COLIN CAMPBELL Electrician	18	KINGFISHER FARM & FLOWER SHOP	16
DAVE FORD TREE CARE	52	LCM ARCHITECTS	36
DENBIES WINE ESTATE	12	MARGRAVE Solicitors LLP	14
DORI VANA PLUMBING	34	MF DECORATING AND BUILDING MAINTENANCE	52
DORKING DECORATORS	46	MICHAEL LLOYD Building plans for home improvements	48
DORKING LAWN TENNIS & SQUASH CLUB	44	NOWER HOUSE Residential Care Home	26
DORKING PEST CONTROL SERVICES	14	PHIL'S MOWING	20
DORKING SERVICE CENTRE	64		
EDE BROS Removals and storage	18		

PORTER & COMPANY Independent	34	SHIERS DÉCOR Painting & decorating	58
Financial Advisers		SOUTH EAST TREE SURGEONS	28
PREMIER GARDENS Garden	56	SPRING REACH NURSERY	58
maintenance		SURREY DOWNS TREE CARE	48
PRIMA PROPERTY SERVICES	36	SURREY HILLS DOG TRAINING	14
Carpet and Upholstery Cleaning		SURREY HILLS HEATING LTD	58
RB FENCING	22	SURREY HILLS SOLICITORS	30
REMEDIAL ROOFING	42	THE TREE ASSOCIATES	18
REVITALISE FITNESS	56	TONY WINCH Carpenter	18
SEYMOURS Estate agents	28	WESTCOTT GARAGE	42
SHERLOCK FUNERAL SERVICE	20	WILLOW GREEN DECORATING	16

For information on advertising please contact advertising@westcottmag.com and if you contact one of our advertisers, please mention that you saw the ad in this magazine, so they know it's worth placing their ad with us! Thanks

RIVERBANK SURGERY

Westcott Street, Westcott, Surrey RH4 3PA **Tel: 875577**

OPENING		<u>Morning</u>	<u>Evening</u>
TIMES:	Monday	8.00-1.00	2.00-6.00
	Tuesday	8.00-1.00	2.00-6.30
	Wednesday	8.00-12.30	Closed
	Thursday	8.00-1.00	2.00-6.00
	Friday	8.00-1.00	2.00-6.30

The emergency out of hours mobile number is **07501 655200**

The surgery is closed and the phones are diverted from 1.00-2.00pm.



Dorking Service Centre Ltd

EST. 2004



Award Winning Local Garage

Garage Services:



Diagnostics



Wheel Alignment



MOT

While U Wait



Servicing

All Makes & Models



Tyres

At Web Competitive Prices



Brakes



Air Conditioning



Cam-Belts



Bike MOT



Digital Service Records



Suspension & Steering



Clutches



158 -160 South St
Dorking
Surrey
RH4 2ES

www.dorkingservice.co.uk

01306 747050

